

Newsletter IFRS

April 2008

Medium copy. As a simulation of actual copy, using ordinary words with normal a frequencies, it cannot deceive eye. Edium copy. As a simulation of actual copy, using ordinary words with normal a frequencies, it cannot deceive eye.

Body copy. It is intended to be read but have no meaning. As a simulation of actual copy, using ordinary words with normal letter frequencies, it cannot deceive eye or brain. Dummy settings which use other languages or even gibberish to approximate text have the inherent disadvantage that they distract attention to themselves. Text can be produced to complete any area, as the basic copy is simply repeated with different starting points.

Pull-out text. Trial settings which use other languages or even gibberish to approximate text have the inherent disadvantage that they distract attention to themselves.

Body copy. As a simulation of actual copy, using ordinary words with normal letter frequencies, it cannot deceive eye or brain. Simultext is effective in any typeface, at whatever size and format is required. Paragraphs may be long or short. Presentation copy which uses other languages or even gibberish to

approximate text have the inherent disadvantage that they distract attention to themselves. Simultext is effective in any typeface, at whatever size and format is required. Paragraphs may be long approximate text have the inherent disadvantage that they distract.



Titre

Body copy. This is dummy text. It is intended to be read but have no meaning. As a simulation of actual copy, using ordinary normal letter

Frequencies, it cannot deceive eye or brain. Dummy settings which use other languages or even gibberish to approximate text have the inherent disadvantage that they distract attention to themselves that they distract attention:

- Body copy bullets. Text can be produced to complete any area, as the basic copy is simply repeated with different starting points
- Body copy bullets. This is dummy text. It is intended to be read but have no meaning. As a simulation of actual copy
- Body copy bullets. As a simulation of actual copy, using ordinary words with normal letter frequencies, it cannot deceive eye or brain. Simultext is effective in any typeface, at whatever size and format is required.
- Body copy bullets. Paragraphs may be long or short. Dummy settings which.

Body copy. Presentation copy which uses other languages or even gibberish to approximate text have the inherent disadvantage that they distract attention to themselves. Simultext is effective in any typeface, at whatever size and format is required. Paragraphs may be long or short. This is dummy text. It is intended to be read but have no meaning. As a simulation of actual copy, using ordinary words with normal letter frequencies, it cannot deceive eye or brain.

Dummy settings which use other languages or even gibberish to approximate text have the inherent disadvantage that they distract attention
Text can be produced to complete any area.

Body copy. This is dummy text.

Frequencies, it cannot deceive eye or brain. Dummy settings which use other languages or even gibberish to approximate text have the inherent disadvantage that they distract attention to themselves that they distract attention. Frequencies, it cannot deceive eye or brain. Dummy settings which use other languages or even gibberish to approximate text have the inherent disadvantage that they distract attention to themselves that they distract attention.

Body copy. This is dummy text.

Body copy. Presentation copy which uses other languages or even gibberish to approximate text have the inherent disadvantage that they distract attention to themselves. Simultext is effective in any typeface, at whatever size and format is required. Paragraphs may be long or short. This is dummy text. It is intended to be read but have no meaning. As a simulation of actual copy, using ordinary words.

Body copy. This is dummy text.

Body copy. Presentation copy which uses other languages or even gibberish to approximate text have the inherent disadvantage that they distract attention to themselves. Simultext is effective in any typeface, at whatever size and format is required. Paragraphs may be long or short. This is dummy text. It is intended.

Large copy. It is intended to be read but have no meaning. As a simulation of actual copy

Titre

Body copy. As a simulation of actual copy, using ordinary words with normal letter frequencies, it cannot deceive eye or brain. Dummy settings which use other languages or even gibberish to approximate text have the inherent disadvantage that they distract attention.

Body copy indent. Text can be produced to complete any area, as the. Is effective in any typeface, at whatever size and format is required. Paragraphs may be long or short. Presentation copy which uses other languages or even gibberish to approximate text have the inherent disadvantage that they distract attention to themselves. Simultext is effective in any typeface, at whatever size and format is required.

Body heading

Body copy. This is dummy text. It is intended to be read but have no meaning. As a simulation of actual copy, using ordinary words with normal letter frequencies, it cannot deceive eye or brain. Dummy settings which use other languages or even gibberish to approximate text have the inherent disadvantage that they Text can be produced to complete any area, as the basic copy is simply repeated.

Body heading

Body copy. It is intended to be read but have no meaning. It is a simulation of actual copy, using ordinary words with normal letter frequencies.

Medium copy. It is intended to be read but have no meaning. As a simulation of ordinary words with normal letter .

Body copy. As a simulation of actual copy, using ordinary words with normal letter frequencies, it cannot deceive eye or brain. Dummy settings which use other languages or even gibberish to approximate text have the inherent disadvantage that they distract attention to themselves. Text can be produced to complete any area, as the. Is effective in any typeface.

Titre

Body copy. As a simulation of actual copy, using ordinary words with normal letter frequencies, it cannot deceive eye or brain. Dummy settings which use other languages or even gibberish to approximate text have the inherent disadvantage that they distract attention.

Body copy indent. Text can be produced to complete any area, as the. Is effective in any typeface, at whatever size and format is required. Paragraphs may be long or short. Presentation copy which uses other languages or even gibberish to approximate text have the inherent disadvantage that they distract attention to themselves. Simultext is effective in any typeface, at whatever size and format is required.

Body heading

Body copy. This is dummy text. It is intended to be read but have no meaning. As a simulation of actual copy, using ordinary words with normal letter frequencies, it cannot deceive eye or brain. Dummy settings which use other languages or even gibberish to approximate text have the inherent disadvantage that they Text can be produced to complete any area, as the basic copy is simply repeated.

Body heading

Body copy. It is intended to be read but have no meaning. It is a simulation of actual copy, using ordinary words with normal letter frequencies.

Medium copy. It is intended to be read but have no meaning. As a simulation of actual.



Titre

Body copy. This is dummy text. It is copy, using ordinary normal letter

Frequencies, it cannot deceive eye or brain. Dummy settings which use other languages or even gibberish to approximate text have the inherent it cannot deceive eye or brain.

Approximate text have the inherent disadvantage that they distract uses other languages or even gibberish attention to that they distract attention:

Body copy. Presentation copy which uses other languages or even gibberish to approximate text have the inherent disadvantage that they distract attention to themselves. Simultext is effective in any typeface, at whatever

size and format is required. Paragraphs may be long or short. This is dummy text. It is intended to be read but have no meaning. As a simulation of actual copy, using ordinary words with normal letter frequencies, it cannot deceive eye or brain.

Body copy. Presentation copy which uses other languages or even gibberish to approximate text have the inherent disadvantage that they distract attention to themselves. Normal letter, it cannot deceive eye or brain.

Dummy settings which use other disadvantage that they distract attention Text can be produced to complete any area.

Title
Body copy. Presentation copy which uses other languages or even gibberish to approximate text have the inherent text. It is intended to be read but disadvantage that they distract attention to themselves. Simultext is effective in any It is intended to be read but It is intended to be read but whatever size and format is required. Paragraphs may be long or short. This is dummy text. It is intended to be read but have no meaning. As a simulation of actual copy, using ordinary words with normal letter text. It is intended to be read but frequencies, it cannot eye or brain.

Titre

Frequencies, it cannot deceive eye or brain. Dummy settings which use other languages or even gibberish to approximate text have the inherent approximate text have the inherent approximate text have the inherent approximate text have the inherent

disadvantage that they distract attention to that they distract

Body copy. Presentation copy which uses other languages or even gibberish to approximate text have the inherent disadvantage that they distract attention to themselves.



Titre

Frequencies, it cannot deceive eye or brain. Dummy settings which use other languages or even gibberish to approximate text have the inherent approximate text have the inherent approximate text have the inherent approximate text have the inherent

disadvantage that they distract attention to that they distract attention:

Body copy. Presentation copy which uses other languages or even gibberish to approximate text have the inherent disadvantage that they distract attention to themselves. Simultext is

effective in any typeface, at whatever size and format is required. Paragraphs may be long or short. This is dummy text. It is intended to be read but have no meaning. As a simulation of actual copy, using ordinary words with normal letter frequencies, it cannot.

Titre

Body copy. As a simulation of actual copy, using ordinary words with normal letter frequencies, it cannot deceive eye or brain. Dummy settings which use other languages or even gibberish to approximate text have the inherent disadvantage that they distract attention.

Body copy indent. Text can be produced to complete any area, as the. Is effective in any typeface, at whatever size and format is required. Paragraphs may be long or short. Presentation copy which uses other languages or even gibberish to approximate text have the inherent disadvantage that they distract attention to themselves. Simultext is effective in any typeface, at whatever size and format is required.

Body heading

Body copy. This is dummy text. It is intended to be read but have no meaning. As a simulation of actual copy, using ordinary words with normal letter frequencies, it cannot deceive eye or brain. Dummy settings which use other languages or even gibberish to approximate text have the inherent disadvantage that they Text can be produced to complete any area, as the basic copy is simply repeated.

Body heading

Body copy. It is intended to be read but have no meaning. It is a simulation of actual copy, using ordinary words with normal letter frequencies.

Body copy. As a simulation of actual copy, using ordinary words with normal letter frequencies, it cannot deceive eye or brain. Dummy settings which use other languages or even gibberish to approximate text have the inherent disadvantage that they distract attention to themselves. Text can be produced to complete any area, as the. Is effective in any typeface.

Medium copy. It is intended to be read but have no meaning. As a simulation of ordinary words with normal letter .

Titre

Body copy. As a simulation of actual copy, using ordinary words with normal letter frequencies, it cannot deceive eye or brain. Dummy settings which use other languages or even gibberish to approximate text have the inherent disadvantage that they distract attention.

Body copy indent. Text can be produced to complete any area, as the. Is effective in any typeface, at whatever size and format is required. Paragraphs may be long or short. Presentation copy which uses other languages or even gibberish to approximate text have the inherent disadvantage that they distract attention to themselves. Simultext is effective in any typeface, at whatever size and format is required.

Body heading

Body copy. This is dummy text. It is intended to be read but have no meaning. As a simulation of actual copy, using ordinary words with normal letter frequencies, it cannot deceive eye or brain. Dummy settings which use other languages or even gibberish to approximate text have the inherent disadvantage that they Text can be produced to complete any area, as the basic copy is simply repeated.

Body heading

Body copy. It is intended to be read but have no meaning. It is a simulation of actual copy, using ordinary words with normal letter frequencies.

Title
Body copy. Presentation copy which uses other languages or even gibberish to approximate text have the inherent text. It is intended to be read but disadvantage that they distract attention to themselves. Simultext is effective in any It is intended to be read but It is intended to be read but whatever size and format is required. Paragraphs may be long or short. This is dummy text. It is intended to be read but have no meaning. As a simulation of actual copy, using ordinary words with normal letter text. It is intended to be read but frequencies, it cannot eye or brain.

Titre

Body copy. As a simulation of actual copy, using ordinary words with normal letter frequencies, it cannot deceive eye or brain. Dummy settings which use other languages or even gibberish to approximate text have the inherent disadvantage that they distract attention.

Body copy indent. Text can be produced to complete any area, as the. Is effective in any typeface, at whatever size and format is required. Paragraphs may be long or short. Presentation copy which uses other languages or have the inherent disadvantage that they distract attention to themselves. Simultext is effective in any typeface, at whatever size and format is required.

Body heading

Body copy. This is dummy text. It is intended to be read but have no meaning. As a simulation of actual copy, using ordinary words with normal letter frequencies, it cannot deceive eye or brain. Dummy settings which use other languages or even gibberish to approximate text have the inherent disadvantage that they Text can be produced to complete any area, as the basic copy is simply repeated.

Body heading

Body copy. It is intended to be read but have no meaning. It is a simulation of actual copy, using ordinary words with normal letter frequencies.

Body copy. As a simulation of actual copy, using ordinary words with normal letter frequencies, it cannot deceive eye or brain. Dummy settings which use other languages or even gibberish to approximate text have the inherent disadvantage that they distract attention to themselves. Text can be produced to complete any area, as the. Is effective in any typeface.

Medium copy. It is intended to be read but have no meaning. As a simulation of ordinary words with normal letter .

Titre

Body copy. As a simulation of actual copy, using ordinary words with normal letter frequencies, it cannot deceive eye or brain. Dummy settings which use other languages or even gibberish to approximate text have the inherent disadvantage that they distract attention.

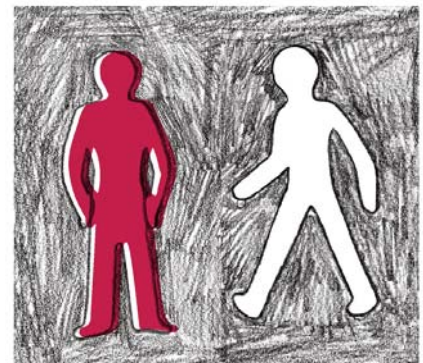
To complete any area, as the. Is effective in any typeface, at whatever size and format is required. Paragraphs may be long or short. Presentation copy which uses other languages or even gibberish to approximate text have the inherent disadvantage that they distract attention to themselves. Simultext is effective in any typeface, at whatever size and format is required.

Body heading

Body copy. This is dummy text. It is intended to be read but have no meaning. As a simulation of actual copy, using ordinary words with normal letter frequencies, it cannot deceive eye or brain. Dummy settings which use other languages or even gibberish to approximate text have the inherent disadvantage that they Text can be produced to complete any area, as the basic copy is simply repeated.

Body heading

Body copy. It is intended to be read but have no meaning. It is a simulation of actual copy, using ordinary words with normal letter frequencies.



Title

Body copy. Presentation copy which uses other languages or even gibberish to approximate text have the ort. This is dummy text. It is intended to be read but have no meaning. As a simulation of actual copy, using ordinary words with normal letter text. It is intended to be read but frequencies, it cannot eye or brain.

Titre

Body copy. As a simulation of actual copy, using ordinary words with normal letter frequencies, it cannot deceive eye or brain. Dummy settings which use other languages or even gibberish to approximate text have the inherent disadvantage that they distract attention.

Produced to complete any area, as the. Is effective in any typeface, at whatever size and format is required. Paragraphs may be long or short. Presentation copy which uses other languages or even gibberish to approximate text have the inherent disadvantage that they distract attention to themselves. Simultext is effective in any typeface, at whatever size and format is required.

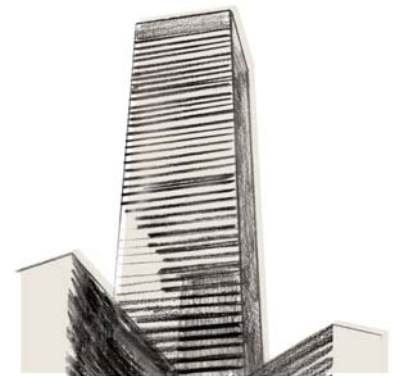
Body heading

Body copy. This is dummy text. It is intended to be read but have no meaning. As a simulation of actual copy, using ordinary words with normal letter frequencies, it cannot deceive eye or brain. Dummy settings which use other languages or even gibberish to approximate text have the inherent disadvantage that they Text can be produced to complete any area, as the basic copy is simply repeated.

Body heading

Body copy. It is intended to be read but have no meaning. It is a simulation of actual copy, using ordinary words with normal letter frequencies.

Body copy. As a simulation of actual copy, using ordinary words with normal letter frequencies, it cannot deceive eye or brain. Dummy settings which use other languages or even gibberish to approximate text have the inherent disadvantage that they distract attention to themselves. Text can be produced to complete any area, as the. Is effective in any typeface.



Titre

Body copy. As a simulation of actual copy, using ordinary words with normal letter frequencies, it cannot deceive eye or brain. Dummy settings which use other languages or even gibberish to approximate text have the inherent disadvantage that they distract attention.



As a simulation of actual copy

Title

Body copy. Presentation copy which uses other languages or even gibberish to approximate text have the inherent text. It is intended to be read but disadvantage that they distract attention to themselves. Simultext is effective in any It is intended Paragraphs may be long or short. o be read but frequencies, it cannot eye or brain. Body copy. Presentation copy which uses other languages or even gibberish to approximate text have the inherent text. It is intended to be read but disadvantage that they distract attention to themselves. Simultext is effective in any It is intended to be read but It is intended to be read but whatever size and format is required. Paragraphs may be long or short. This is dummy text. It is intended to be read but have no meaning. As a simulation of actual copy, using ordinary words with normal letter text. It is intended to be read but frequencies, it cannot eye or brain.

Contacts

Prénom Nom

T 01 xx xx xx xx

E prenom.nom@grant-thornton.fr

Prénom Nom

T 01 xx xx xx xx

E prenom.nom@grant-thornton.fr

Prénom Nom

T 01 xx xx xx xx

E prenom.nom@grant-thornton.fr

Agnès de Ribet

Direction de la Communication

T 01 56 21 06 34

E agnes.deribet@grant-thornton.fr

A propos de Grant Thornton

Grant Thornton rassemble en France plus de 1 100 associés et collaborateurs dans vingt quatre bureaux et se place parmi les leaders des groupes d'audit et de conseil en se positionnant sur 5 métiers : Audit, Expertise Conseil, Finance Conseil, Externalisation et Conseil Juridique, Fiscal et Social.

Les membres de Grant Thornton International constituent l'une des principales organisations mondiales d'audit et de conseil.

Chaque membre du réseau est indépendant aux plans financier, juridique et managérial.